



ANDY SCHELL // 59 NORTH, LTD.

CROSSING THE GULF STREAM

59 NORTH // ISBJÖRN SAILING

- ▶ Andy Schell & Mia Karlsson
- ▶ 50,000+ Bluewater Miles // 7 Combined Atlantic Crossings
- ▶ Former Event Managers for Caribbean 1500
- ▶ Own & operate S&S Swan 48 'Isbjorn' on offshore passages worldwide
- ▶ Host of 'On the Wind' sailing podcast



CREW OFFSHORE ON A SWAN 48



Summer '18 // Arctic & Iceland

Fall '18 // Portugal to Canaries

January '19 // Trans-Atlantic

Winter '19 // RORC Caribbean 600

Summer '19 // Cuba, Bermuda, Newfoundland

Early '20 // South Pacific

Dec. '20 // Sydney-Hobart Race

Spring '21 // AC36 in Auckland, NZ



59°-NORTH.COM

'ON THE WIND' // 'SAILING STORIES'



DOWNLOAD FREE ON ITUNES & WHEREVER YOU GET YOUR PODCASTS!

SESSION GOALS

- ▶ Offshore v. Coastal Sailing in General
- ▶ Ocean Currents & the Gulf Stream Effects // What to Expect IN the Stream
- ▶ Seasickness
- ▶ Three Common Routes
- ▶ Weather
- ▶ Establishing Expectations
- ▶ Resources
- ▶ Inspire you to go sailing!



THE OCEAN SAILOR...

- ▶ Jack of all trades, master of none...
- ▶ Must understand the fundamentals of all onboard systems
- ▶ You will become a weather forecaster!
- ▶ Outside WX help is GREAT
- ▶ Don't need to be an expert...but ultimately, YOU'RE responsible.





CROSSING THE GULF STREAM // 59 NORTH, LTD.

OFFSHORE OR COASTAL?

“YOU CAN SAIL FOR ONE DAY, CAN’T YOU? THAT’S ALL IT IS – ONE DAY AFTER ANOTHER.”

Harry Pidgeon // Solo Sailor

OFFSHORE FUNDAMENTALS

- ▶ Keep the RIG UP
- ▶ Keep the WATER OUT....
- ▶ Keep the CREW HEALTHY
- ▶ Stay 'ahead' of the weather
- ▶ Boat comes FIRST



OFFSHORE FUNDAMENTALS

- ▶ Sound boat - hull, rig/sails, engine, crew health
- ▶ Safety Equipment - take it seriously!
 - ▶ UK/MCA Coding requirements
 - ▶ ISAF/World Sailing Racing Standards
 - ▶ World Cruising Club Rally Standards
 - ▶ Not all safety equipment is created equal! (USCG v. ISO PFDs)
- ▶ Even on short passages - you will sleep better!
- ▶ Float Plan Mythology



#isbjörnsaili

north.com







Isbjörn

#isbjörnsailing

A photograph of a sailboat on the ocean. The boat is white with a dark hull and has three masts. A person is visible on the deck. The background is a vast blue ocean under a clear sky.

SALTY DAWG RALLY // 2013

CAUTIONARY TALE!!!

59-NORTH.COM/EPIRB

This page is meant to be for the USCG and other relevant authorities should our EPIRB onboard be activated. Pertinent information can be found below:

- Track Isbjorn in real-time via our YB Tracker on 59-north.com/tracking
- In case of emergency, contact Dennis Schell, Andy's Dad (USA cell phone), +1-610-763-2829
- Satalite phone (Iridium) number: (Will only be turned on in an emergency) +8816 3256 2126

Offshore Passage Schedule Summer 2017:

LEG 11, 2017

- **Route:** Stockholm - Vindön, West Coast of Sweden.
- **Dates:** September 8 - 21, 2017
- **Trip Specific:** Costal sailing with friends from West to East Coast. Day sails in combination with a few overnight sails.
Departure Nynäshamn to Visby, Gotland Sept 12, 6pm local time.
- **Crew onboard:**
 1. Captain Andy Schell (owner) (USA)
 2. Maria Karlsson (owner) (SWE)
 3. Thomas Harkin (USA)
 4. Patrick Maloney (CAN)

CROSSING THE GULF STREAM // 59 NORTH, LTD.

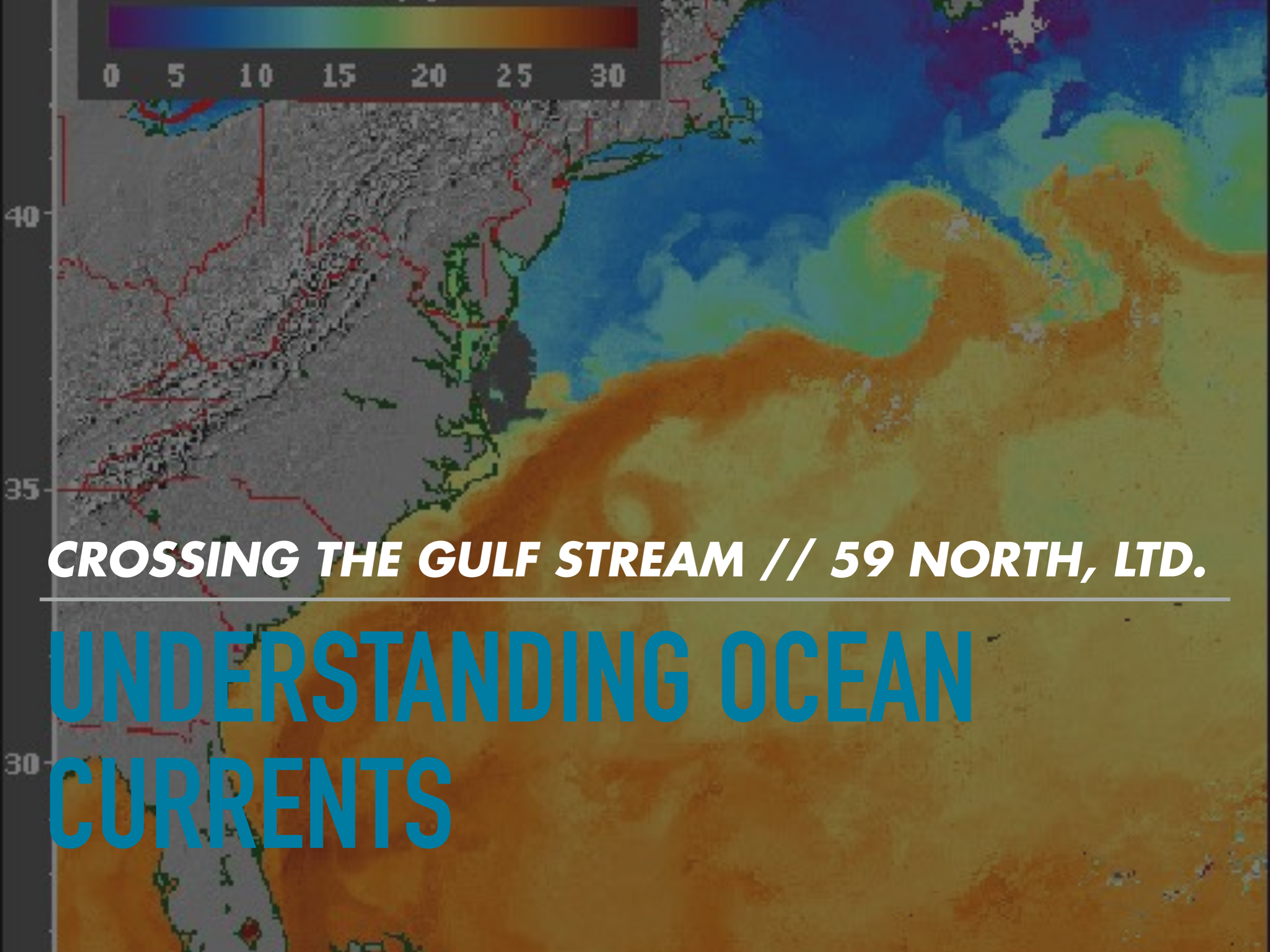
ICW/COASTWISE





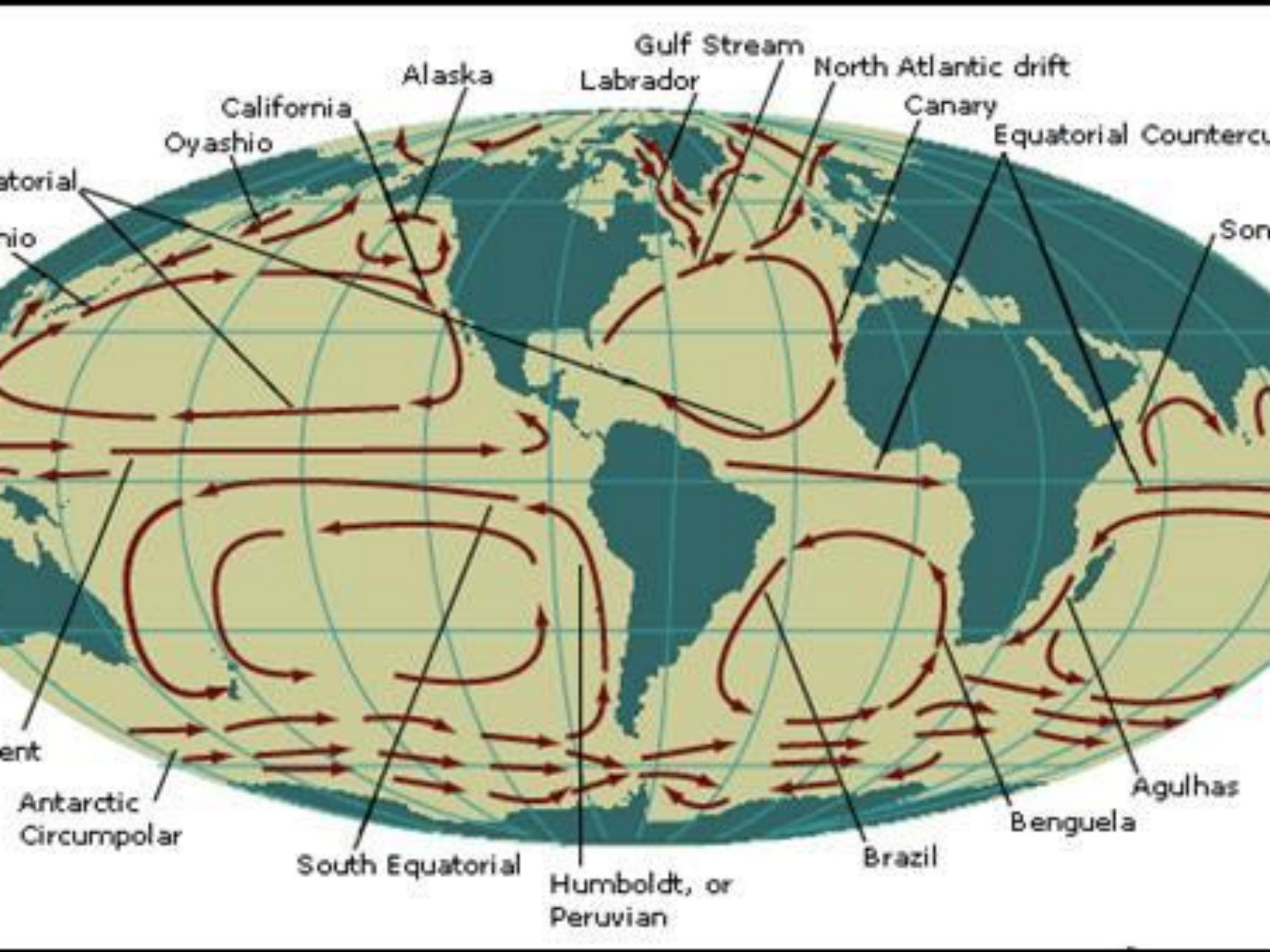
COASTWISE // ICW

- ▶ Take it easy & slow - enjoy the ride!
- ▶ Bring lots of podcasts / audiobooks!
- ▶ No reason NOT to make small offshore hops in nice weather - if you time the weather windows right.
- ▶ If you go near-coastal, you'll ride **INSIDE** the Gulf Stream
- ▶ In Florida, the GS runs **VERY** close to shore, especially further south
- ▶ Farther south you get into Florida, the easier the GS crossing is



CROSSING THE GULF STREAM // 59 NORTH, LTD.

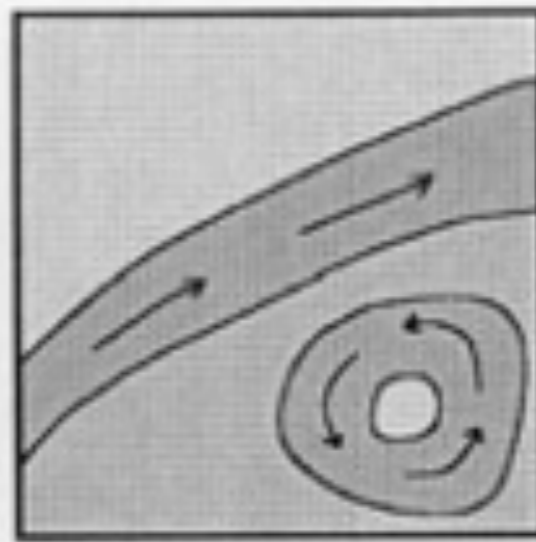
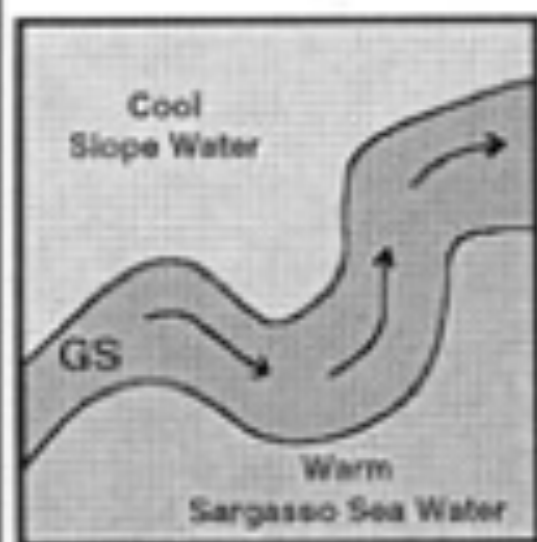
UNDERSTANDING OCEAN CURRENTS



FEATURES OF THE G.S.

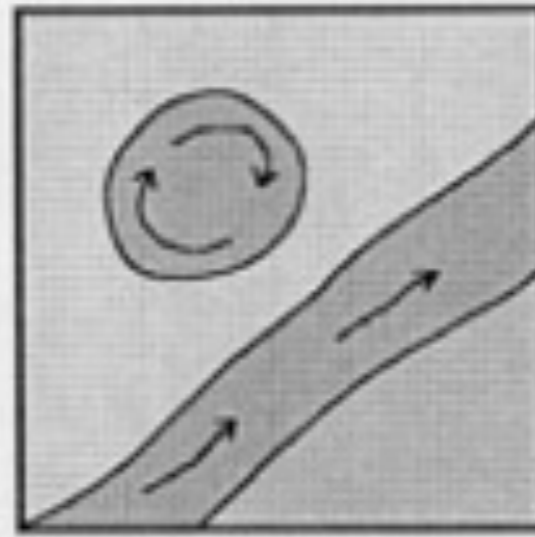
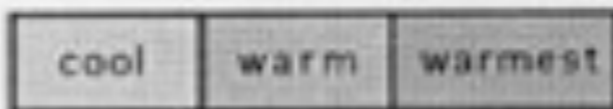
- ▶ Warm water
- ▶ Speed of Flow
- ▶ NW v. SE Walls
- ▶ Meanders and Eddies
- ▶ Weather Patterns
- ▶ Sea Conditions





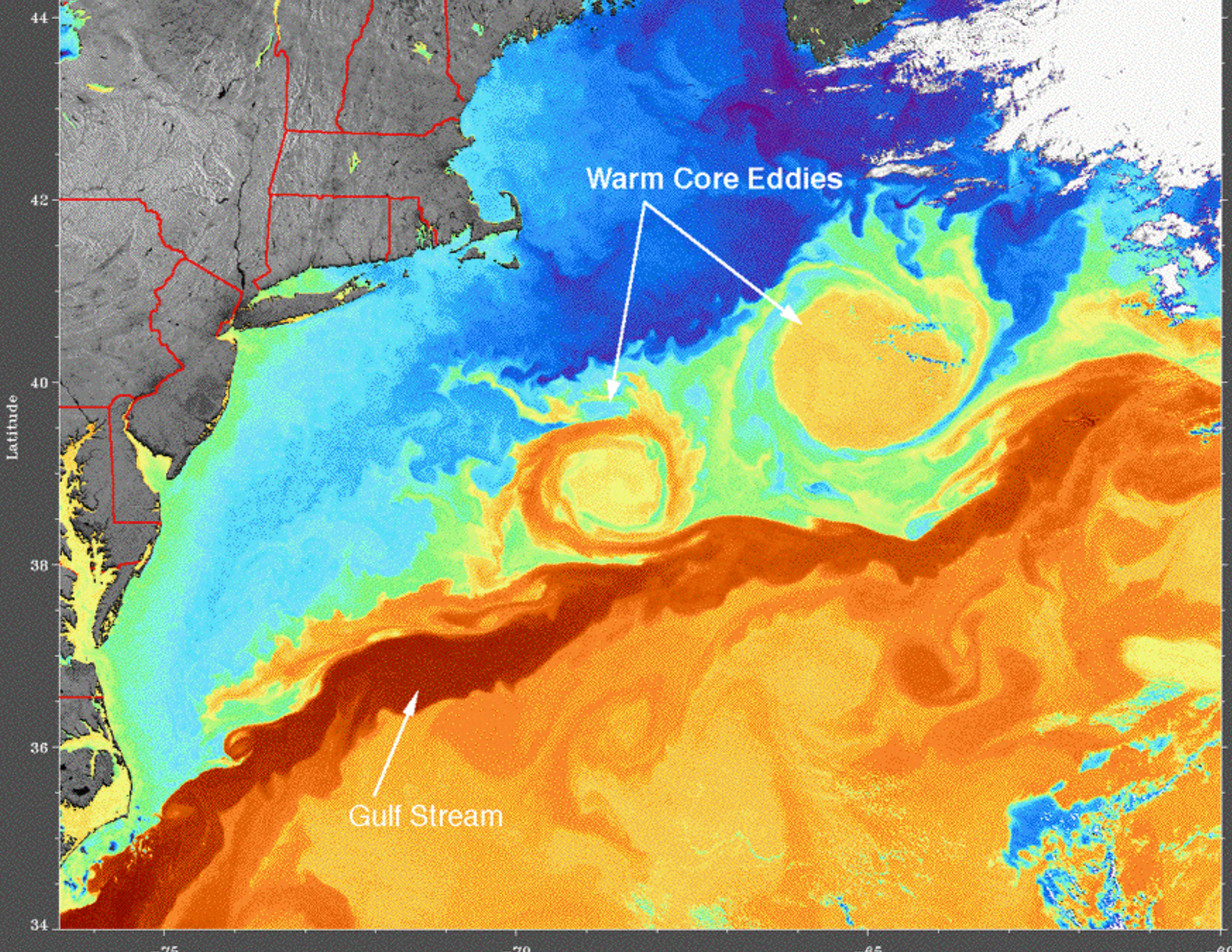
Cold
Core
Ring
Formation

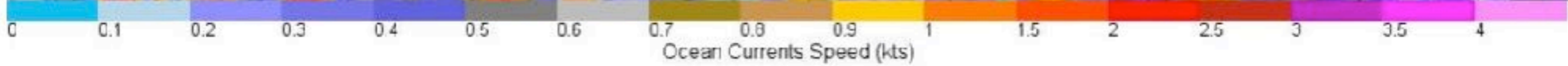
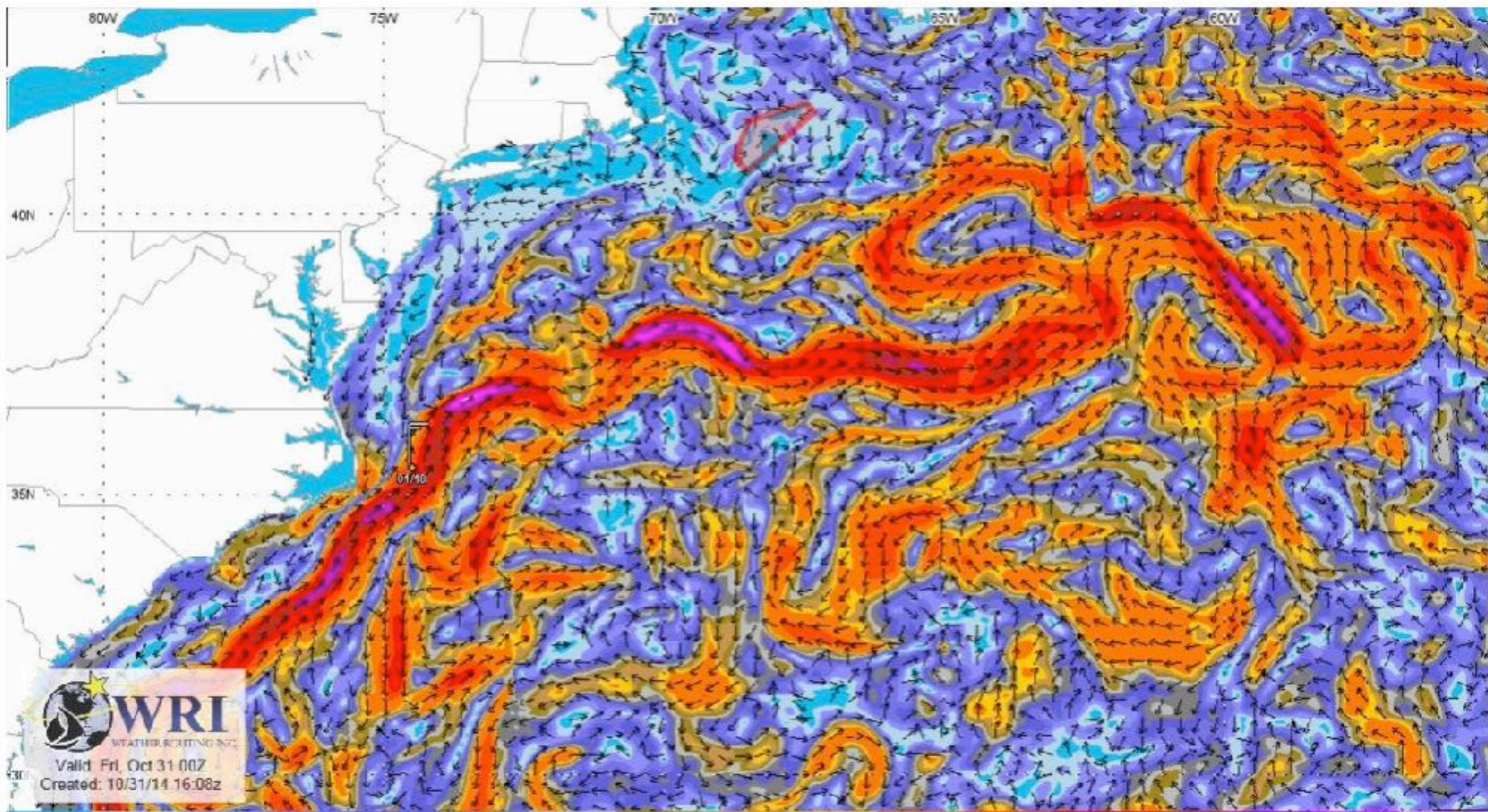
Temperature



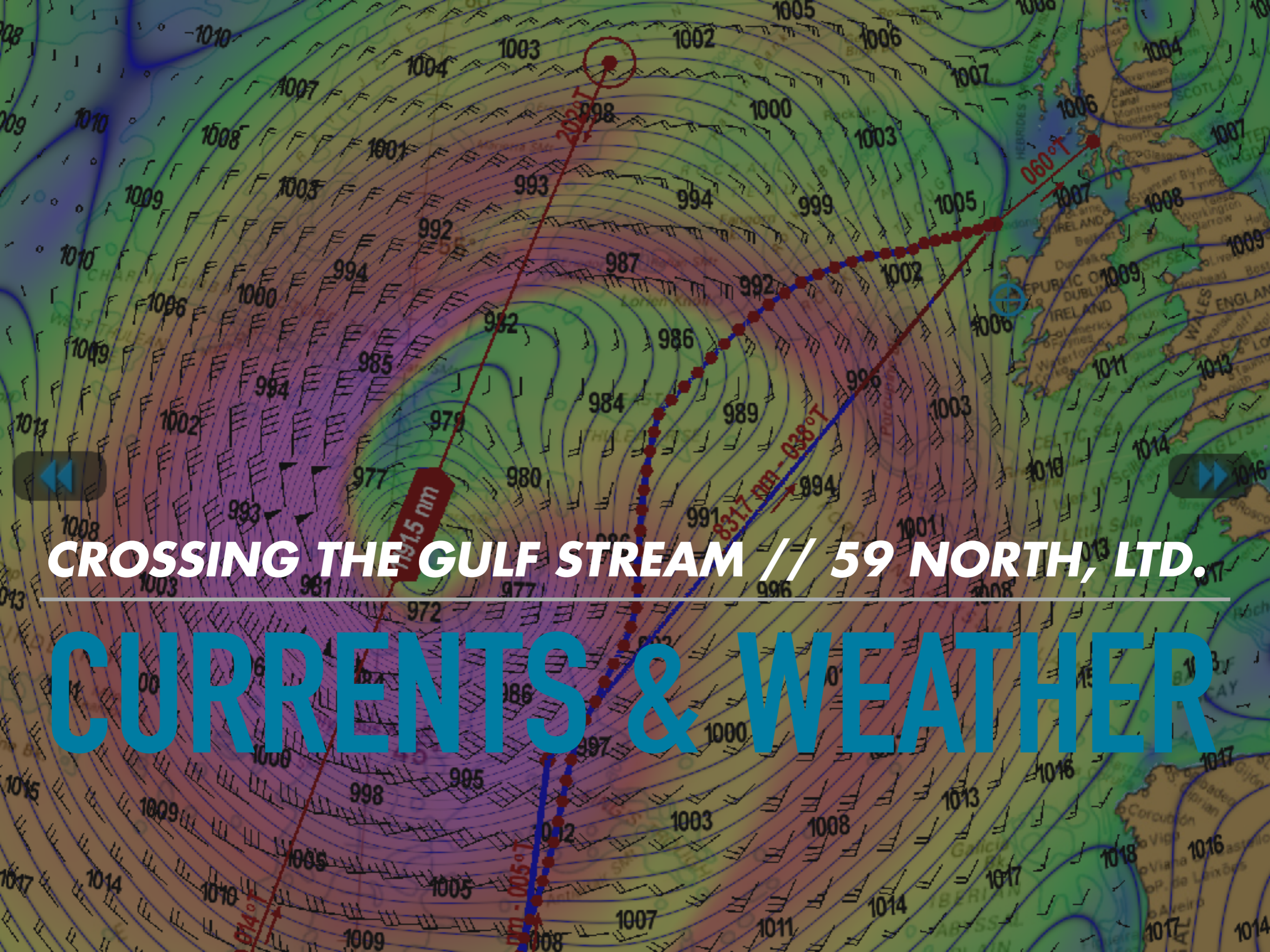
Warm
Core
Ring
Formation

Time →









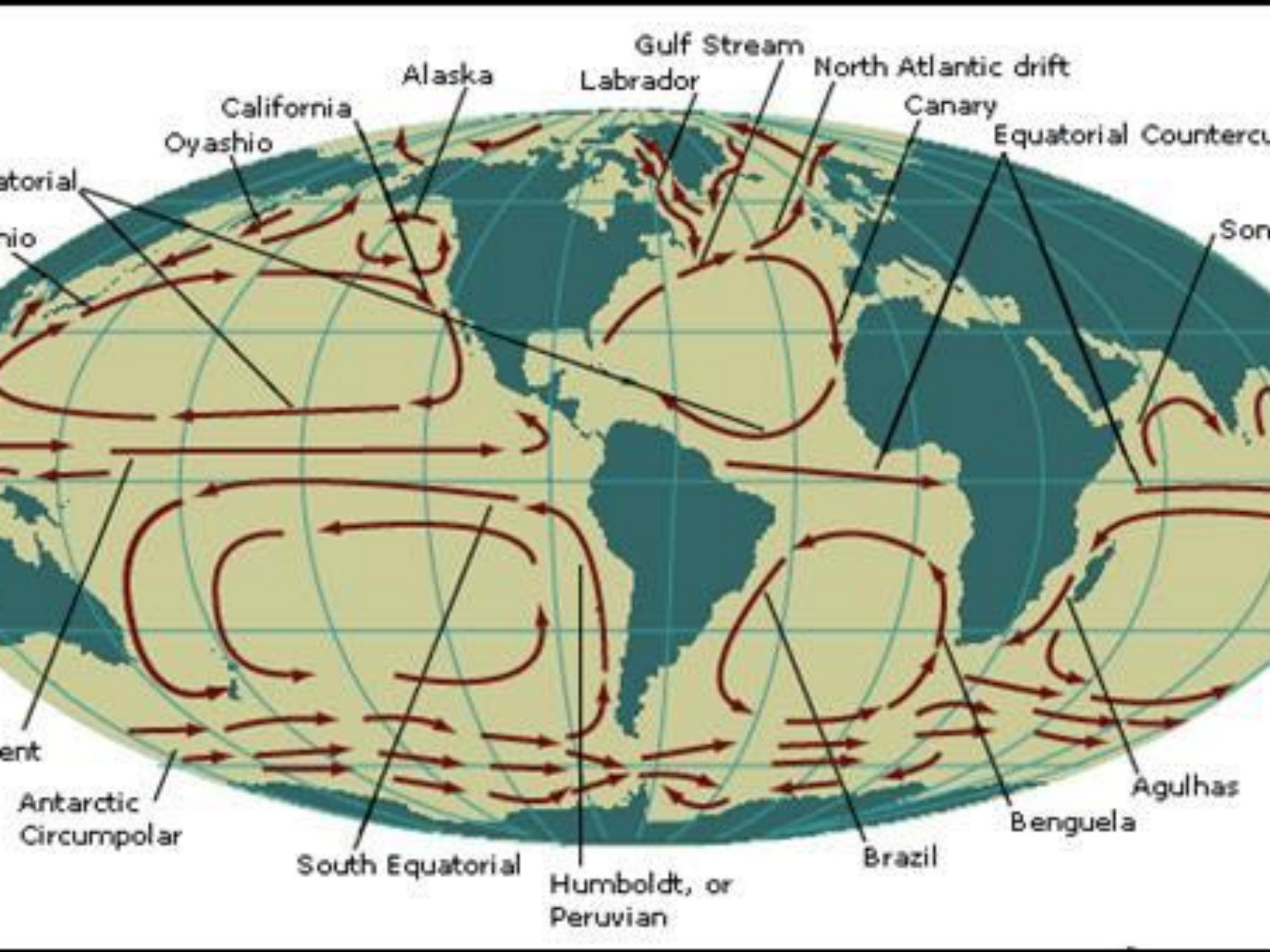
CROSSING THE GULF STREAM // 59 NORTH, LTD.

CURRENTS & WEATHER

THE OSTAR GALE: WRI ANALYSIS

This storm had originated within the expected gale track for this time of year, originating back on the 06th and strengthening as it progressed ENE'ward to just south of Labrador to where it is currently (At approximately 55N/20W). Typically, in early June, the gale/track is at a weaker phase, and are smaller in size, though this system in particular has been an outlier, evolving quickly and strengthening quickly as it progressed ENE'ward. A gale is defined as a system with winds that exceed beaufort force 8, and this system has proved to do so producing even storm force winds at times as you've indicated. A system of this strength only occurs less than 10% of the time.

Another concept to note is that due to the higher than normal concentration of ice bergs, more significant melting has led to sea surface temperature southeast of the Canadian Maritimes MUCH COLDER than normal. This, in conjunction with the changing of the seasons leading to WARMER sea surface temperatures further south, helps drive the genesis of gales. When this difference it is much GREATER, developing systems have the potential to strengthen more dramatically than normal.



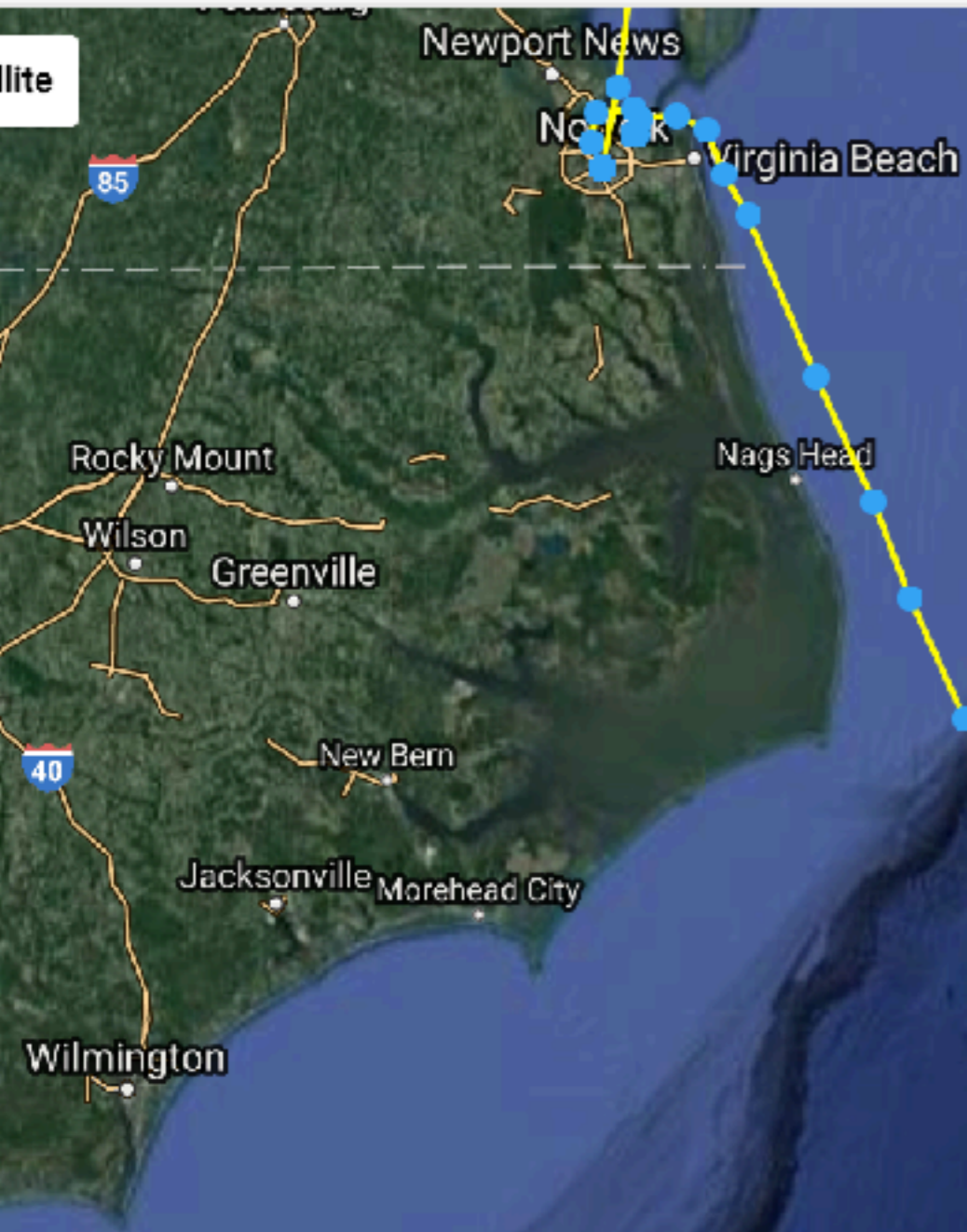


CROSSING THE GULF STREAM // 59 NORTH, LTD.

GULF STREAM EFFECTS

CARIB 1500: 2015

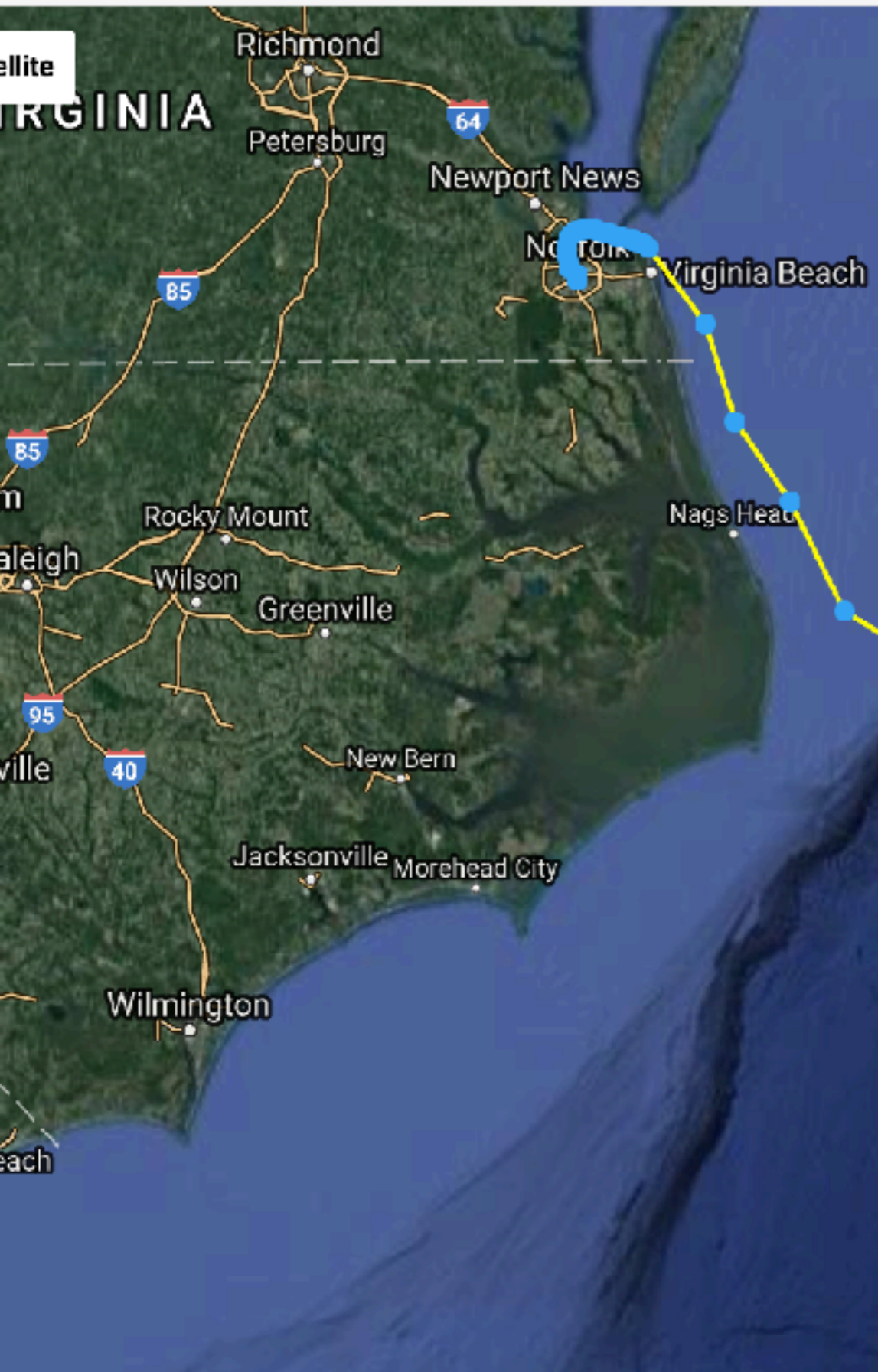




CARIB 1500: 2015



CARIB 1500: 2016



CARIB 1500: 2016

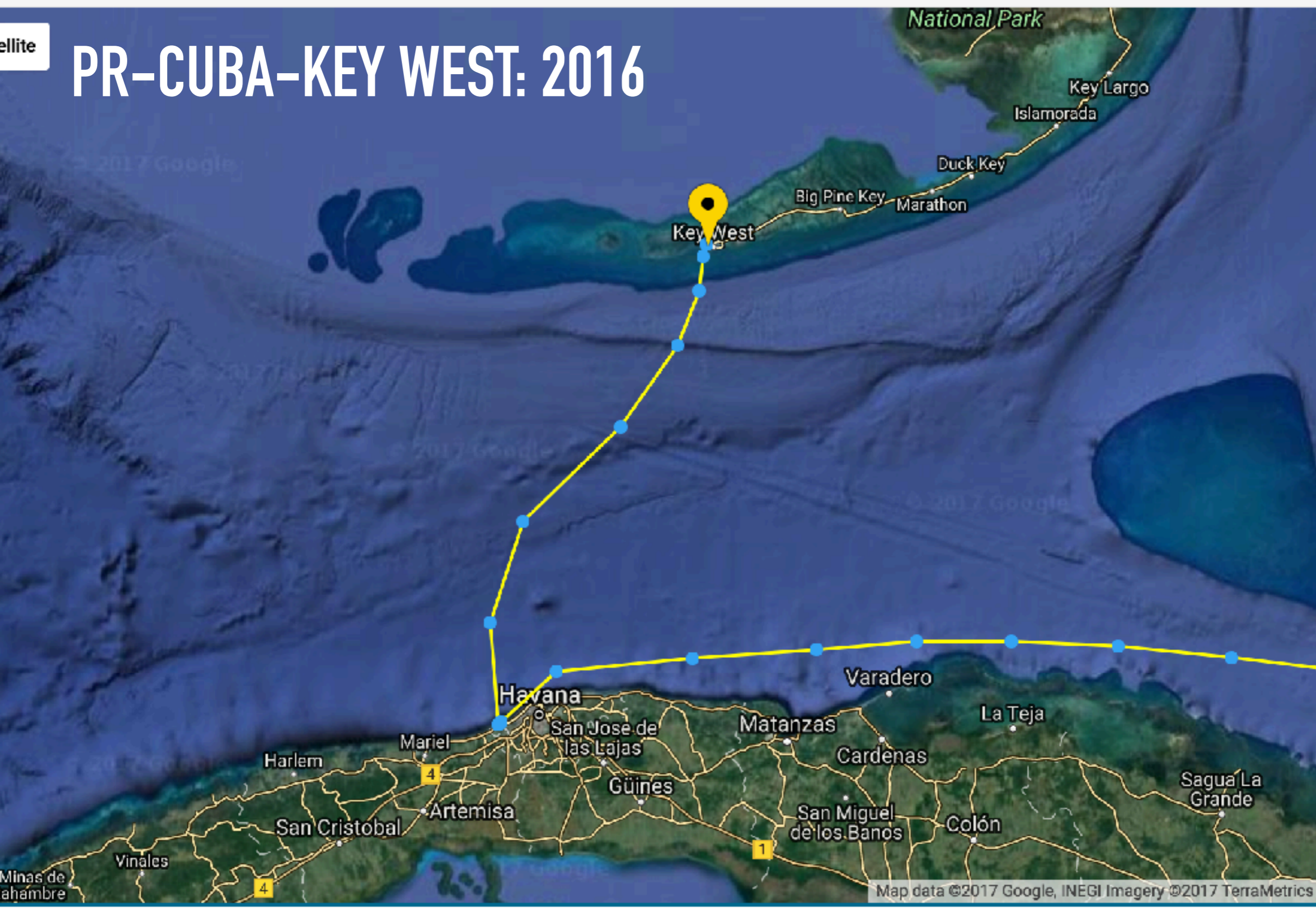
Satellite

PR-CUBA-KEY WEST: 2016



ellite

PR-CUBA-KEY WEST: 2016



CROSSING THE GULF STREAM // 59 NORTH, LTD.

THE MOVING SIDEWALK...

KEY WEST TO FT. LAUDERDALE // 2016

CAUTIONARY TALE!!!



CROSSING THE GULF STREAM // 59 NORTH, LTD.

SEASICKNESS

SEASICKNESS

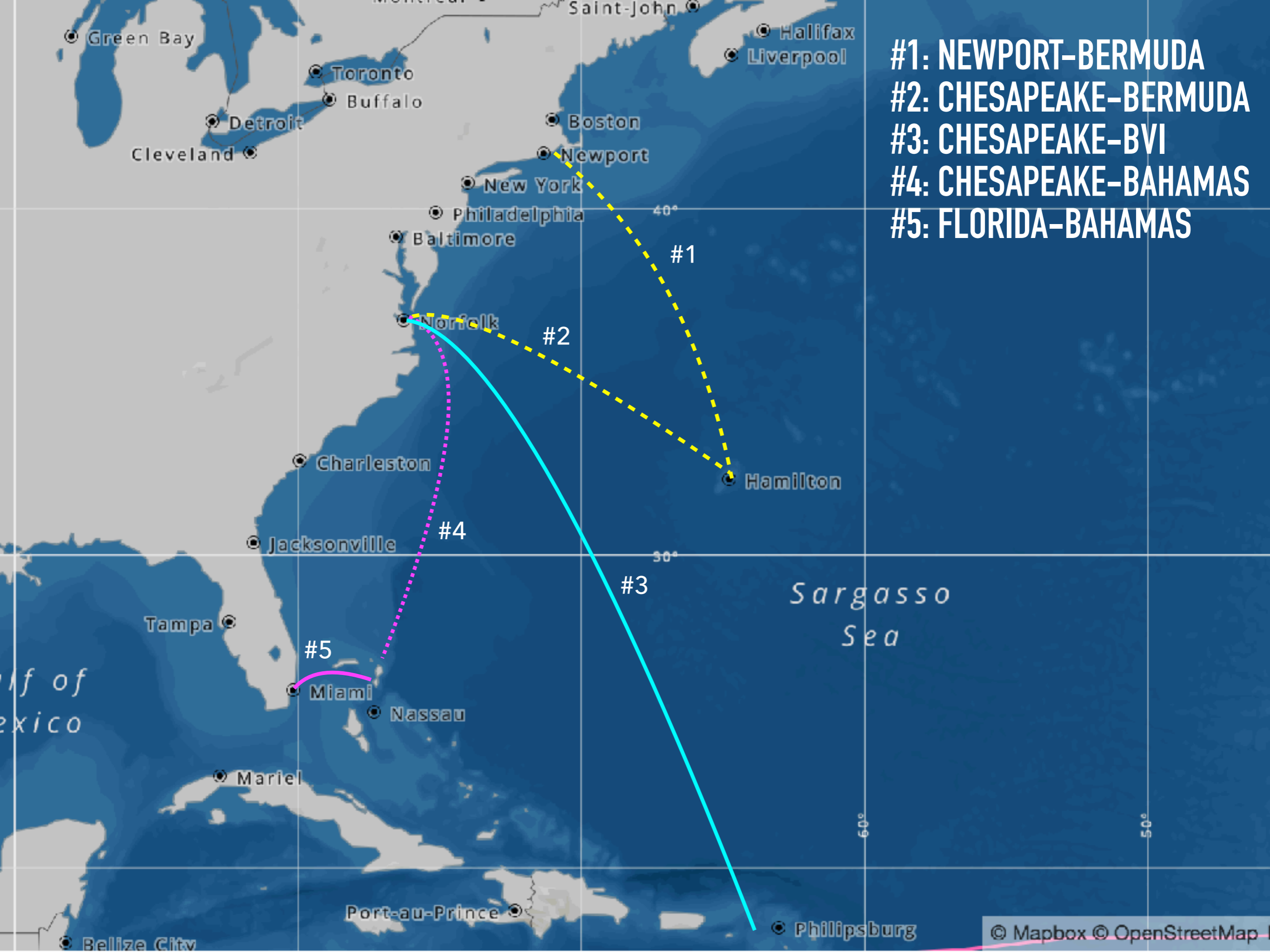
- ▶ The Gulf Stream WILL get bumpy - be mentally prepared for it, and allow yourself to adapt.
- ▶ The boat CAN handle it
- ▶ Go easy on **CAFFEINE, ALCOHOL**
- ▶ Drink **LOTS** of water
- ▶ Okay not to eat for a few days - listen to your body



A man and a woman are on a sailboat, smiling and looking towards the camera. The man is wearing a red polo shirt with a logo that says "59 NORTH" and has sunglasses on his head. The woman is wearing a light blue button-down shirt. They are on the deck of a sailboat, with the ocean and another sailboat with a red sail visible in the background. The text "CROSSING THE GULF STREAM // 59 NORTH, LTD." is overlaid in white, bold, italicized font across the middle of the image.

CROSSING THE GULF STREAM // 59 NORTH, LTD.

WHICH ROUTE?



- #1: NEWPORT-BERMUDA
- #2: CHESAPEAKE-BERMUDA
- #3: CHESAPEAKE-BVI
- #4: CHESAPEAKE-BAHAMAS
- #5: FLORIDA-BAHAMAS

WHICH ROUTE?

1. Newport-Bermuda: Early Summer (Race is mid-June - watch out on the return passage!)
 2. Chesapeake-Bermuda: Summer
 3. Chesapeake-BVI: Fall/Winter
 4. Chesapeake-Bahamas: Fall/Winter
 5. S. Florida-Bahamas: Fall/Winter/Spring
- ▶ Any other route ideas?

A close-up photograph of a Raymarine wind speedometer. The device features a circular analog scale with markings at 30, 60, 90, and 120. A needle points to approximately 30. Below the scale is a digital display showing the number 33.7. The brand name 'Raymarine' is visible in the top left corner of the device's frame. The background is a blurred view of the sea.

NEWPORT-BERMUDA RACE RETURN // 2014

CAUTIONARY TALE!!!

(6H) Oct 12, 2017 08:00 (EDT)

40°56'N, 79°52'W

CROSSING THE GULF STREAM // 59 NORTH, LTD.

WEATHER

WEATHER

- ▶ Weather will dictate the kind of crossing you have
- ▶ If you miss a window, or analyze it wrong, the stakes are MUCH higher
- ▶ How seriously you need to take the weather depends on where you're going...
- ▶ Weather ROUTING v. Weather FORECASTING



WEATHER EFFECTS

- ▶ **FALL:** instability & changing seasons creates even greater volatility in the GS
- ▶ **SUMMER:** risk for early-season hurricanes
- ▶ **SPRING:** Similar to the fall, **COLDER** coming home
- ▶ **NEWPORT/BERMUDA:** Harder to time departure b/c GS is farther offshore



CAPE HATTERAS STORM // 1999

CAUTIONARY TALE!!!

CROSSING THE GULF STREAM // 59 NORTH, LTD.

IDEAL PATTERNS

IDEAL WEATHER PATTERNS

- ▶ Wind WITH current sounds logical...sometimes it's not.
- ▶ Depart IMMEDIATELY following a cold front in the fall from the NE
- ▶ In Florida, cold fronts are weaker & shorter passage distance means you can sneak out on a tighter window
- ▶ Consider the source when looking at forums/cruising radio nets - what do they know that you don't?!

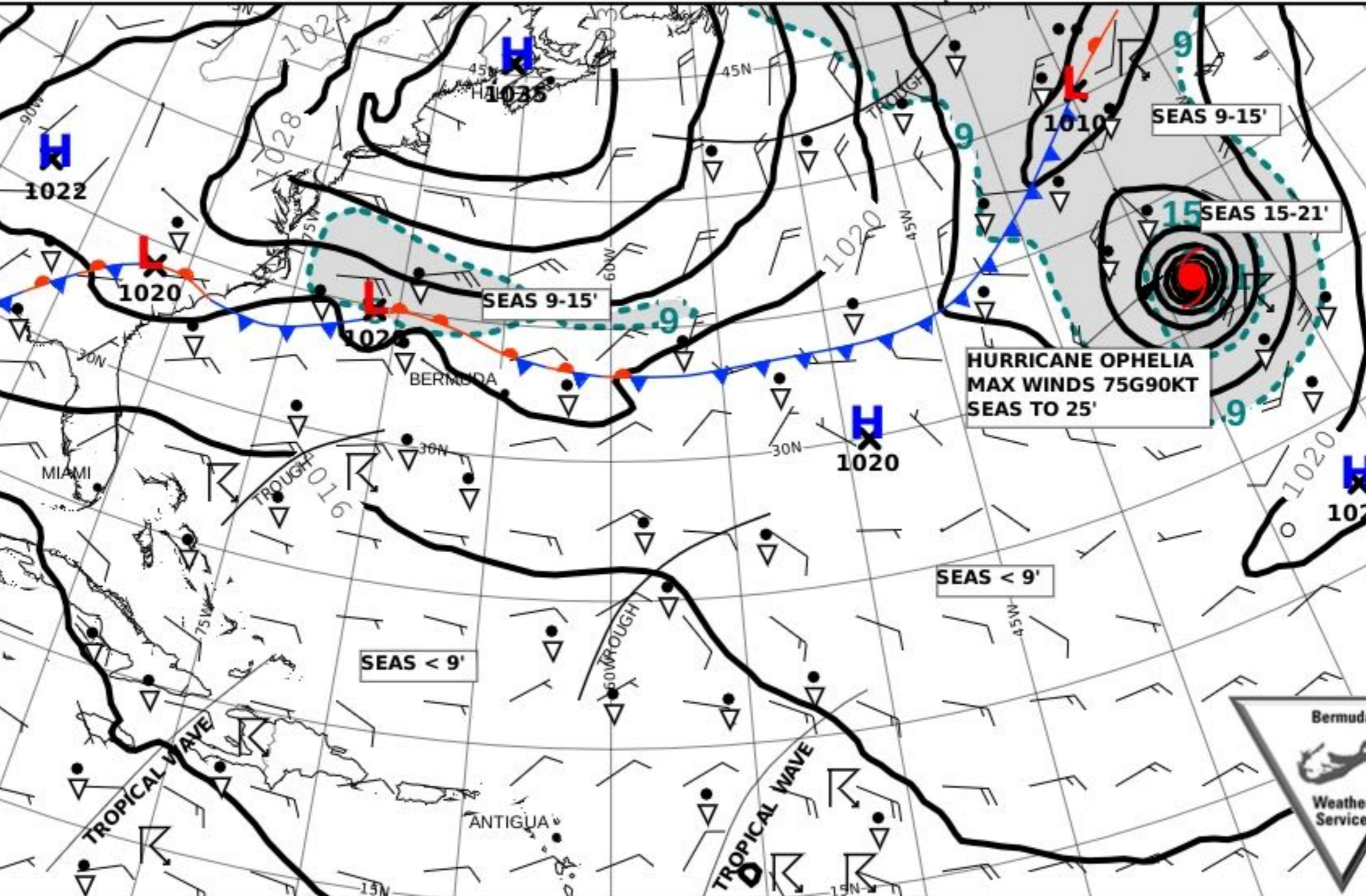


WEATHER.BM

BERMUDA WEATHER

CHART #1 DAY 2 MARINE FORECAST

----- SIG. WAVE HEIGHT >9ft
●● RAIN ** SNOW ☁ THUNDER
☔ SHOWER



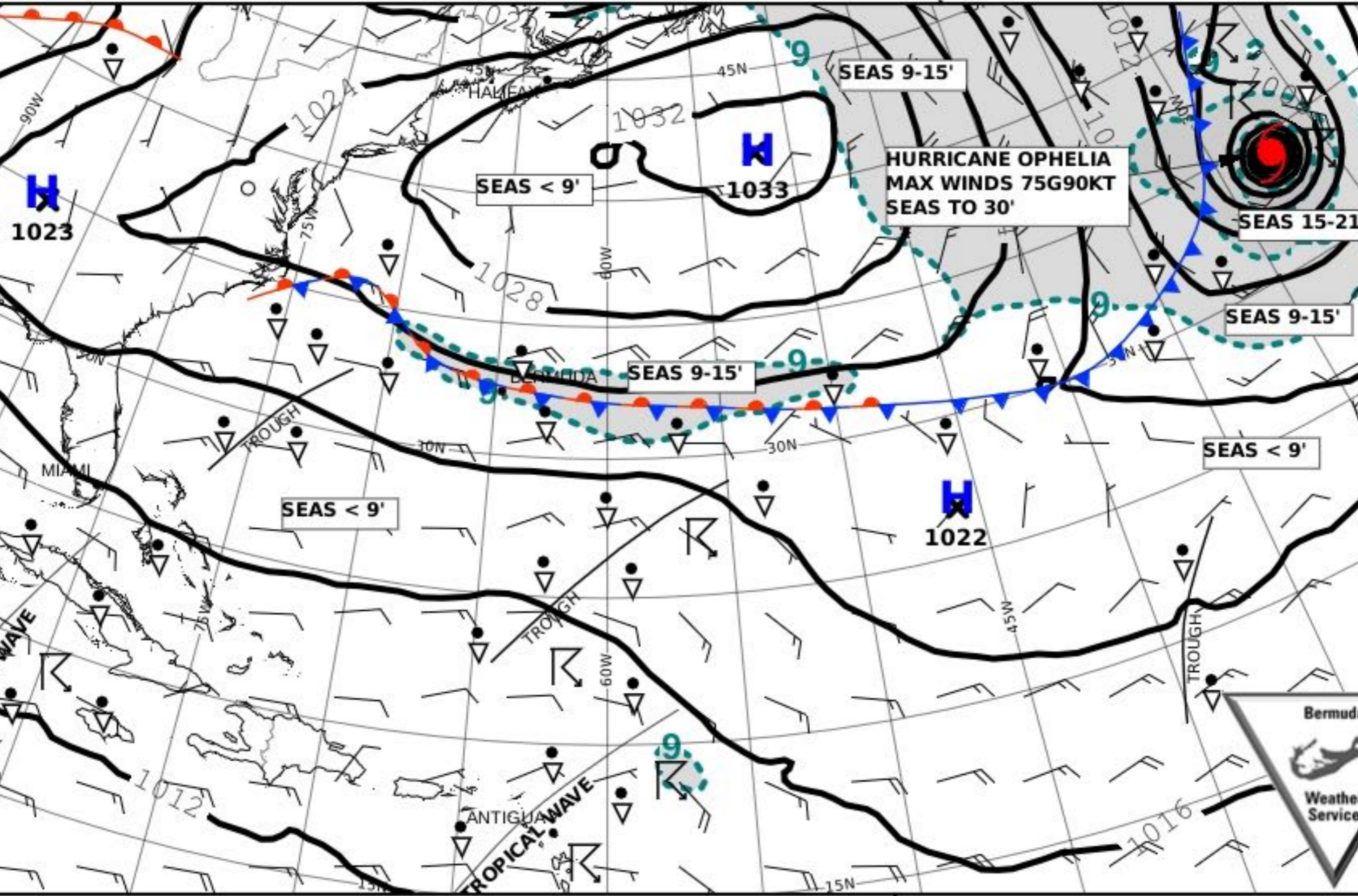
VALID AT: 09:00 FRI 13 OCT 2017
DO NOT PUBLISH/POST AFTER: 07:00 FRI 13 OCTOBER 2017

TREAT THE LOCATION OF TROPICAL SYSTEMS AS APPROXIMATE
CAUTION PLEASE MONITOR TROPICAL ADVISORIES



CHART #2 DAY 3 MARINE FORECAST

--- SIG. WAVE HEIGHT >9ft
●● RAIN ** SNOW ☁ THUNDER
☂ SHOWER



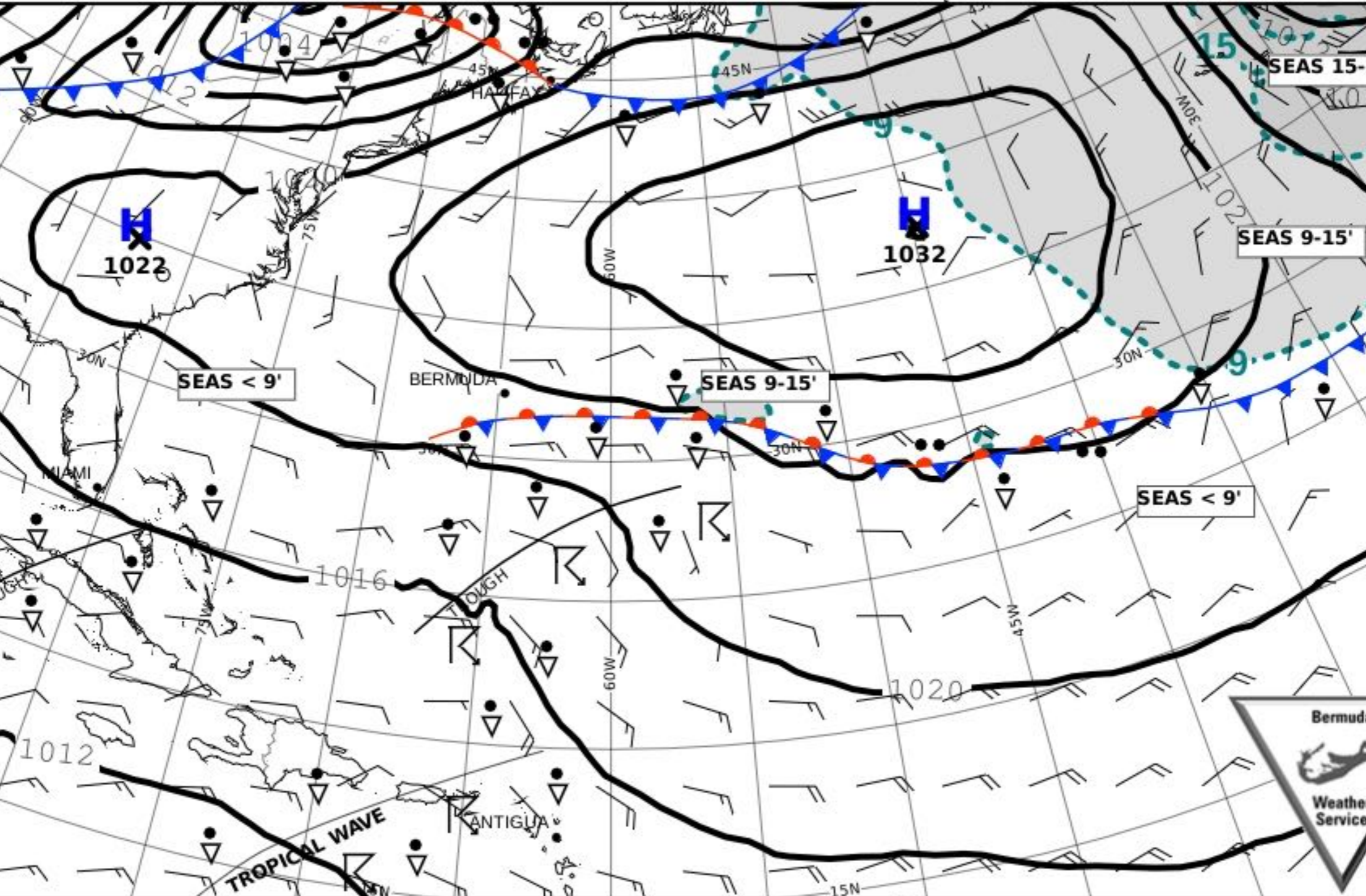
VALID AT: 09:00 SAT 14 OCT 2017
DO NOT PUBLISH/POST AFTER: 07:00 FRI 13 OCTOBER 2017

TREAT THE LOCATION OF TROPICAL SYSTEMS AS APPROXIMATE
CAUTION PLEASE MONITOR TROPICAL ADVISORIES



CHART #3 DAY 4 MARINE FORECAST

--- SIG. WAVE HEIGHT >9ft
●● RAIN ** SNOW
☁ THUNDER
☁ SHOWER



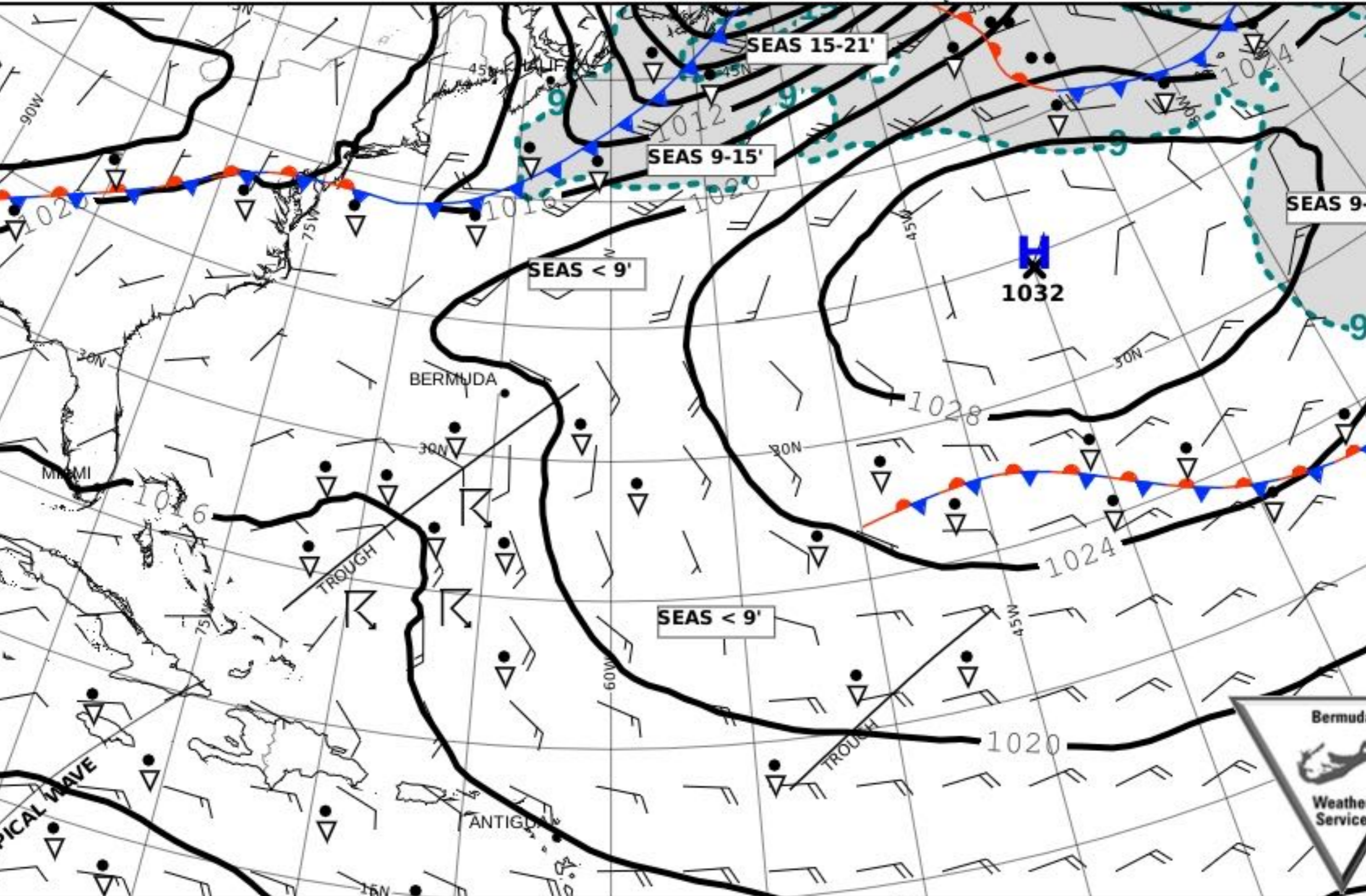
VALID AT: 09:00 SUN 15 OCT 2017
DO NOT PUBLISH/POST AFTER: 07:00 FRI 13 OCTOBER 2017

TREAT THE LOCATION OF TROPICAL SYSTEMS AS APPROXIMATE
CAUTION PLEASE MONITOR TROPICAL ADVISORIES



CHART #4 DAY 5 MARINE FORECAST

--- SIG. WAVE HEIGHT >9ft
●● RAIN ** SNOW
☁ SHOWER



VALID AT: 09:00 MON 16 OCT 2017
DO NOT PUBLISH/POST AFTER: 07:00 FRI 13 OCTOBER 2017

TREAT THE LOCATION OF TROPICAL SYSTEMS AS APPROXIMATE
CAUTION PLEASE MONITOR TROPICAL ADVISORIES

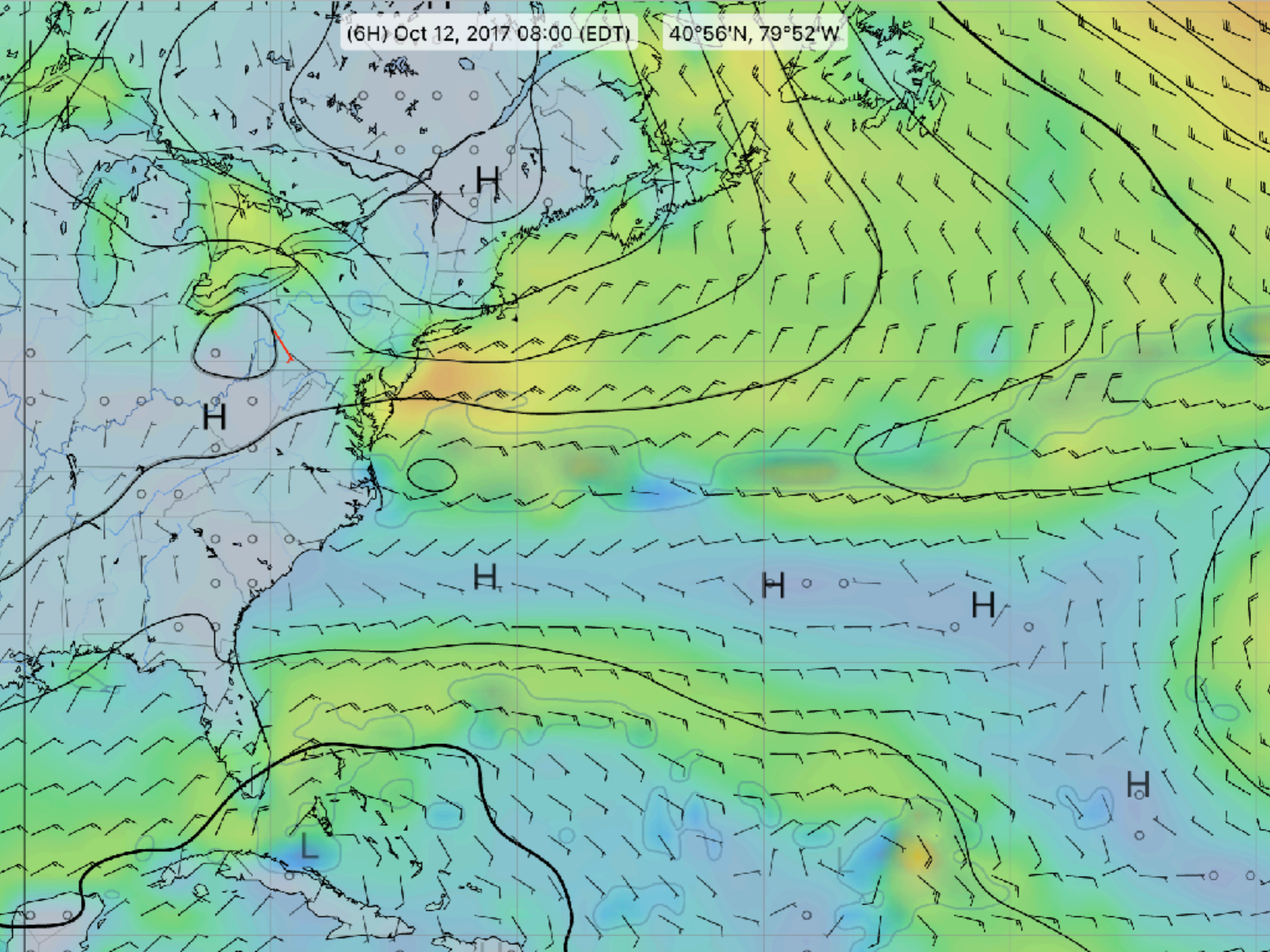


LUCKGRIB // WEATHER 4D 2.0

GRIB FORECASTS

(6H) Oct 12, 2017 08:00 (EDT)

40°56'N, 79°52'W



CROSSING THE GULF STREAM // 59 NORTH, LTD.

LUCKGRIB (POPOUT)

BAHAMAS-ANNAPOLIS // 2014

CAUTIONARY TALE!!!

KEY TAKEAWAYS

- ▶ Understanding weather takes practice - start NOW
- ▶ Limitations of GRIB files - RAW weather data
- ▶ GRIB v. Synoptic Chart
- ▶ Not all GRIB viewers are created equally
- ▶ Focus on big picture FIRST - identify patterns
- ▶ Get comfortable with text forecasts
- ▶ Weather, more than ANY other factor, will make or break your GS crossing

RESOURCES

- ▶ LuckGrib (Apple)
- ▶ iPad tools: Weather 4D 2.0
- ▶ Weather Routing // WRI Inc.
- ▶ weather.bm - synoptic charts
- ▶ NOAA Ocean Prediction Center / NHS
opc.ncep.noaa.gov
nhc.noaa.gov
- ▶ Attainable Adventure Cruising
morganscloud.com

A woman wearing a red jacket and a yellow hood is smiling while steering a sailboat on the ocean. The boat's mast and rigging are visible, and the sea is a deep blue with white-capped waves. The image has a semi-transparent dark overlay.

CROSSING THE GULF STREAM // 59 NORTH, LTD.

DISTILLING IT ALL...

OVERALL TAKEAWAYS

- ▶ The Gulf Stream is NOT as big a deal as people make it...
- ▶ ...But it CAN be if you miss your window!
- ▶ You probably WILL get seasick - you DEFINITELY will adapt
- ▶ Establish realistic expectations for you & crew
- ▶ Routes depend on season, boat & crew
- ▶ Learn to read & interpret a VARIETY of weather sources
- ▶ Consider the source before taking advice from cruisers
- ▶ Get outside your comfort zone & go on an adventure!





THANKS!

HOW TO FIND US...

- ▶ 59-north.com
- ▶ Instagram: @59northsailing
- ▶ facebook.com/59north

